



Technical Report No. 704201862901-00

Applicant : Ascend Torque Flow Controls Co., Ltd.
Attn : Kaka Hua
Manufacture : Ascend Torque Flow Controls Co., Ltd.
Attn : Kaka Hua
Trade mark : N/A
Type of equipment : Rack & Pinion Pneumatic Actuator
Model/type : ARC-125
Test Specifications : IEC 60529:1989+A1:1999+A2:2013
Documentation submitted : See attachment
Issued by: TÜV SÜD Certification and Testing (China) Co., Ltd. Shanghai Branch
Start Date : 2018-5-3
Sample size : 2 Pc
Purpose of examination : IP68 test (Submersible depth:10m, Duration:12hrs)
Results : Pass

No extract, abridgment or abstraction from a test report may be published or used to advertise a product without the written consent of the Director of TÜV SÜD Certification and Testing (China) Co., Ltd. Shanghai Branch. The results contained herein apply only to the particular sample tested and to the specific test carried out and not to samples of the current production line.



China

Technical Report No. 704201862901-00

1. Description of the equipment:

Rated voltage : Not provided.
Rated current : Not provided.
Construction : Stationary
Protection class : I
Degree of protection against ingress of liquids : IP68
Rated operation : Continuous

2. Rating label:

Not provided.

3. Deviations:

N/A

4. Remarks:

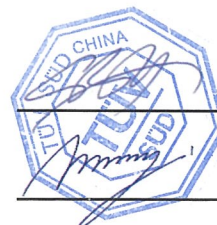
N/A

Test results see Safety Aspects.

Performed By : Shanshan HUANG

Reviewed and Approved By : Yi BA

Date of issue : 2018-12-21





China

Technical Report No. 704201862901-00**Safety Aspects****Standards : IEC 60529 Edition 2.2**

Selected sub-clauses from	Checked points	Requirement	Pass / Fail/Not application	Remark
Clause 12 & 13	IP6X	<p>The test wire of shall not penetrate and adequate clearance shall be kept.</p> <p>The enclosure under test is supported in the test chamber and the pressure inside the enclosure is maintained below the surrounding atmospheric pressure by a vacuum pump. The suction connection shall be made to a hole specially provided for this test.</p> <p>If it is impracticable to make a special hole, the suction connection shall be made the cable inlet hole, If there are other holes these shall be treated as intended for normal use on site.</p> <p>The object of the test is to draw into the enclosure, by mean of depression, a volume of air 80 times the volume of the sample enclosure tested without exceeding the extraction rate of 60 volumes per hour. In no event shall the depression exceed 2 kPa.</p> <p>If an extraction rate of 40-60 volumes per hour is obtained the duration of the test is 2h.</p> <p>If , with a maximum depression of 2 kPa, the extraction rate is less than 40 volumes per hour, the test is continued until 80 volume have been drawn through, or a period of 8 h has elapsed.</p> <p>The protection is satisfactory if no deposit of dust is observable inside the enclosure at the end of the test.</p>	Pass	The duration of the test is 8h. No dust entered.
Clause 14	IPX8	12h duration, 10m under water	Pass	No water entered into enclosure. (shown in Attachment No.1).

Equipment list

No.	Type	Manufacture	Model	Equipment ID	Next Calibration
369	IPX7-8 Test Device	Xinghe (Guangzhou)	SH8106	S0712369-YQ	5/18/2020
370	Dust Chamber for IP5X,IP6X	Xinghe (Guangzhou)	SH8502	S0712370-YQ	5/18/2019

Attachment No.1 Photos

During Test:

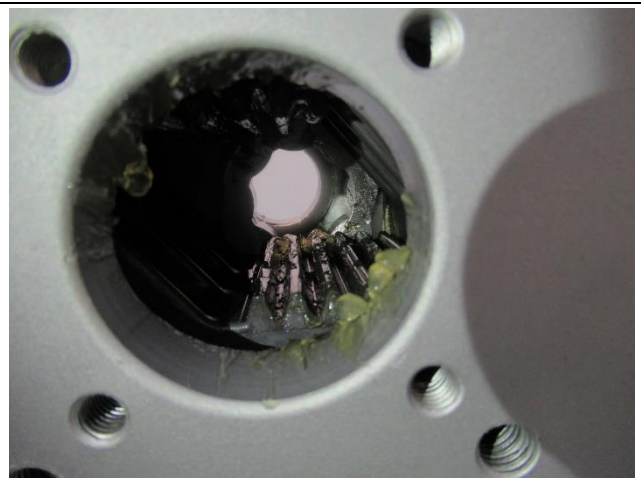


General view:



After IPX8 test:





After IP6X test:

